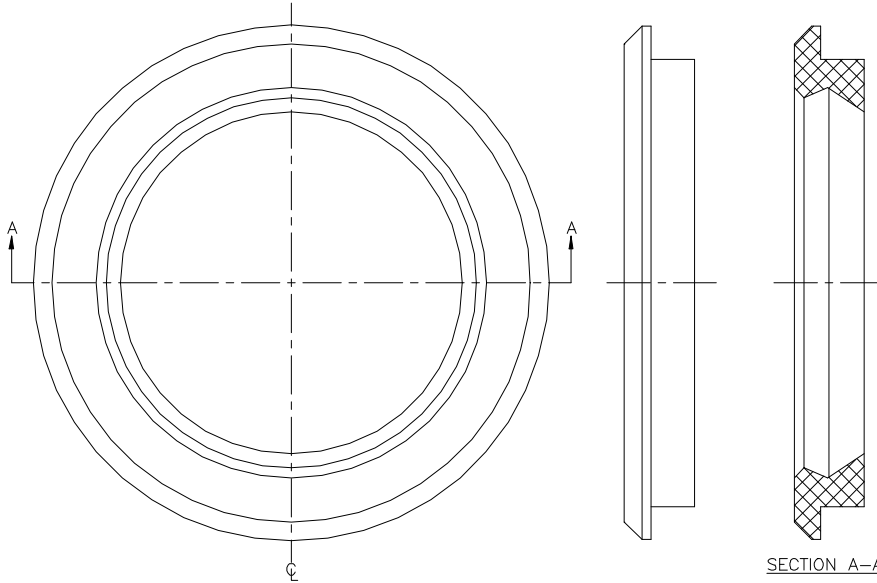


# PIPE SEAL GROMMET

THE PIPE SEAL GROMMET IS DESIGNED TO SEAL PIPING PENETRATIONS THROUGH FLAT AND CURVED SURFACES. THE USER SIMPLY CUTS THE REQUIRED ENTRY HOLE, LUBRICATES THE PIPE AND SEAL, AND FORCES THE PIPE THROUGH THE SEAL. THE OUTSIDE DIAMETER OF THE PIPE SEAL GROMMET EXPANDS SEALING THE PIPE TO THE BASIN WALL.

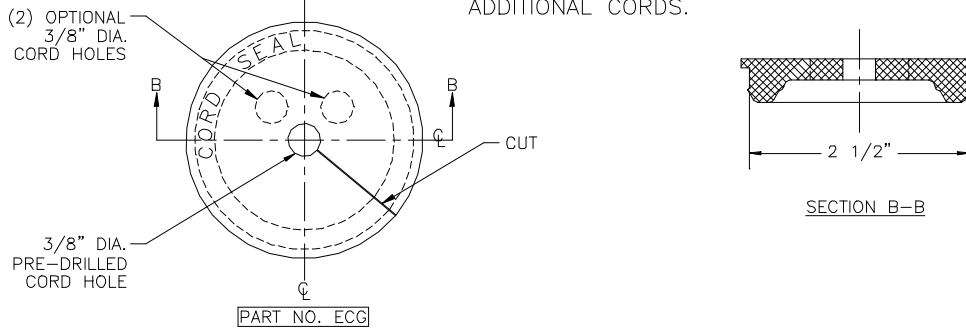


PART NO.	NOMINAL PIPE SIZE	ACTUAL PIPE O.D.	HOLE SAW SIZE
G038	3/8	.675	1
G050	1/2	.840	1 1/4
G075	3/4	1.050	1 1/4
G100	1	1.315	1 3/4
G125	1 1/4	1.660	3
G150	1 1/2	1.900	3
G200	2	2.375	3
G300	3	3.500	4
G400	4	4.500	5
G600	6	6.625	7

ALL DIMENSIONS IN INCHES

# ELECTRIC CORD SEAL GROMMET

THE ELECTRIC CORD SEAL GROMMET IS DESIGNED TO PROVIDE A GAS TIGHT SEAL FOR ELECTRIC CORDS PASSING THROUGH STEEL AND FIBERGLASS BASIN COVERS. THE CORD SEAL GROMMET IS ENGINEERED TO WORK WITH A 2 1/2" OPENING IN THE COVER PLATE. CORD SEAL GROMMETS ARE SHIPPED WITH ONE PRE-DRILLED HOLE AND HAS TWO INDENTS FOR ADDITIONAL CORDS.



**INSTALLATION INSTRUCTIONS:**

1. PULL ELECTRIC CORD THROUGH 2" HOLE.
2. WORK CORD THROUGH CUT IN SEAL.
3. STARTING AT ONE EDGE OF THE CUT WORK EDGE OF 2" HOLE INTO THE LIP OF THE CORD SEAL.

**TOPP**  
INDUSTRIES  
INCORPORATED

**GROMMETS**

Reference: -

Highway 25 North P.O. Box 420  
Rochester, IN 48976  
Phone: 800/354-4534 Fax: 574/223-6106

Scale: None

Drawn By: RM

App'd By: .

Date: 07/08/03

Supersedes Prints  
Prior To: 07/08/03

This print is and contains confidential proprietary information owned exclusively by TOPP INDUSTRIES, INC. It is furnished on a strictly confidential basis. This restriction includes, but is not limited to the condition that this print will not only be used as a record or to identify or inspect parts or for other information purposes and will not be used to manufacture or procure the manufacture of the items shown in this print by any other source than TOPP INDUSTRIES, INC.

Reference No: 10096

**Revisions**

① First Released 06/27/03
