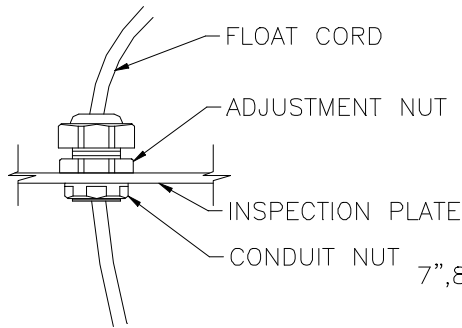


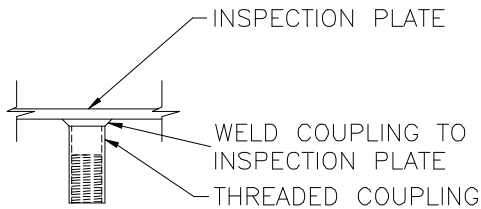
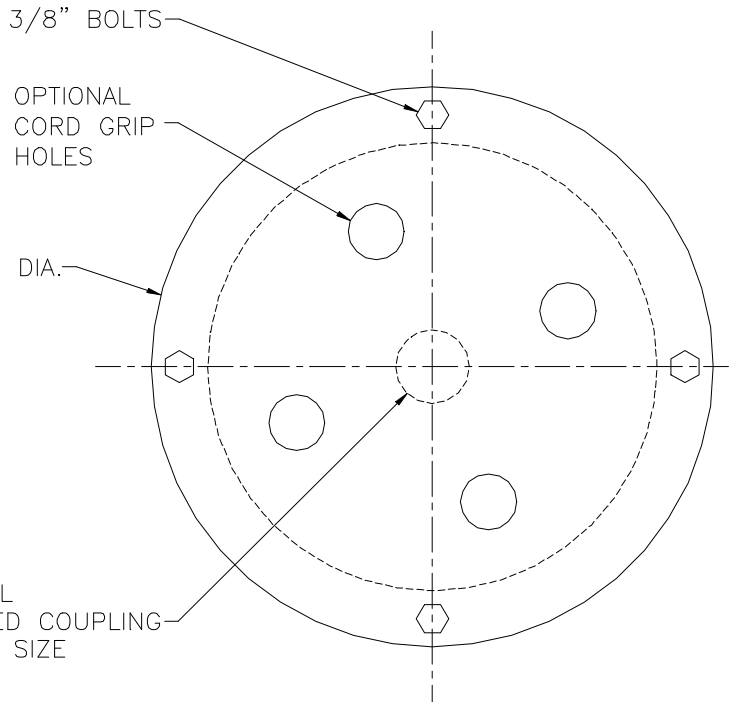
INSPECTION AND FLOAT CONTROL PLATES

FLOAT CONTROL PLATES ARE DESIGNED TO BE USED ON STEEL COVERS AND UTILIZE THE 8" ACCESS HOLE. CORD LEVELS ARE SET WITH THE CORD GRIPS. CORDS CAN BE FASTENED TO THE OPTIONAL GALVANIZED OR FIBERGLASS FLOAT POLE. INSPECTION PLATES CAN BE ORDERED WITH 1, 2, 3 OR 4 CORD LEVEL GRIPS AND AN OPTIONAL THREADED FLOAT POLE COUPLING.



OPTIONAL CORD LEVEL GRIP DETAIL

PART NO.	NPT	SEALS FROM:	CORDS TO:
GRIP050	1/2"	.170-	.470
GRIP075	3/4"	.450-	.709
GRIP100	1"	.590-	1.000



THREADED COUPLING DETAIL FOR OPTIONAL THREADED FLOAT POLE

PART NO.	INSPECTION PLATE WITH:
INO0-	BLANK INSPECTION PLATE
INO1-	ONE CORD LEVEL GRIP
INO2-	TWO CORD LEVEL GRIPS
INO3-	THREE CORD LEVEL GRIPS
INO4-	FOUR CORD LEVEL GRIPS

NOTE: SPECIFY NUMBER OF CORD GRIPS IF MORE THAN FOUR ARE REQUIRED.

INSTALLATION INSTRUCTIONS

1. REMOVE CONTROL PLATE FROM COVER.
2. LOOSEN GRIPS AND INSERT CORDS.
3. SET CORD LEVELS AND TIGHTEN GRIPS.
4. INSTALL FLOATS AND FASTEN TO POLE.
5. APPLY GASKET TO COVER OR PLATE.
6. PLACE PLATE ON COVER AND TIGHTEN BOLTS.



FLOAT CONTROL PLATE	Scale: None	This print is and contains confidential proprietary information owned exclusively by TOPP INDUSTRIES, INC. It is furnished on a strictly confidential basis. This restriction includes, but is not limited to the condition that this print will not only be used as a record or to identify or inspect parts or for other information purposes and will not be used to manufacture or procure the manufacture of the items shown in this print by any other source than TOPP INDUSTRIES, INC.
Reference: -	Drawn By: RM	
	App'd By: . Date: 07/08/03	
Highway 25 North P.O. Box 420 Rochester, IN 46975 Phone: 800/354-4534 Fax: 674/223-6106	Supersedes Prints Prior To: 07/08/03	Reference No: 10097

Revisions	
①	First Released 06/27/03