

SGR-125 & SGR-200 Assembly Guide

Attach upper wall bracket to basin wall and guiderail support

Attach guiderail extensions together using a Tube Coupler

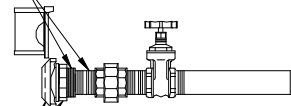
Attach wall bracket to basin wall and guiderail support, also connect the guiderail extension brace through the same hole as shown

Connect end of extension handle to the stem of the gate valve

Thread pump onto moveable side of disconnect and drop the movable side into place using the guiderails as the guides for proper placement

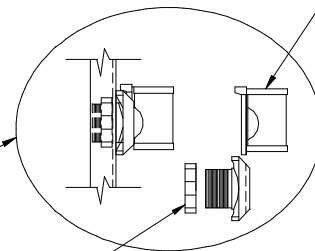
Install 3/8" x 2" long anchor bolts in bottom of basin

Thread piping of discharge kit into FNPT connection of disconnect



Disconnect is connected to guiderail plate using the disconnect nut to secure

Moveable side of disconnect



Disconnect nut

Disconnect Detail

TOPP
INDUSTRIES
INCORPORATED

SGR-125 & SGR-200
ASSEMBLY GUIDE

Reference:

Highway 25 North P.O. Box 420
Rochester, IN 48975
Phone: 800/354-4534 Fax: 574/223-6106

Scale: None

Drawn By: RM

App'd By: .

Date: 03/11/04

Supersedes Prints

Prior To: 03/11/04

This print is and contains confidential proprietary information owned exclusively by TOPP INDUSTRIES, INC. It is furnished on a strictly confidential basis. This restriction includes, but is not limited to the condition that this print will not only be used as a record or to identify or inspect parts or for other intermediate purposes and will not be used to manufacture or procure the manufacture of the items shown in this print by any other source than TOPP INDUSTRIES, INC.

Reference

No: 12758

Revisions

Ⓜ	First Released.