

# Ball Check Valve

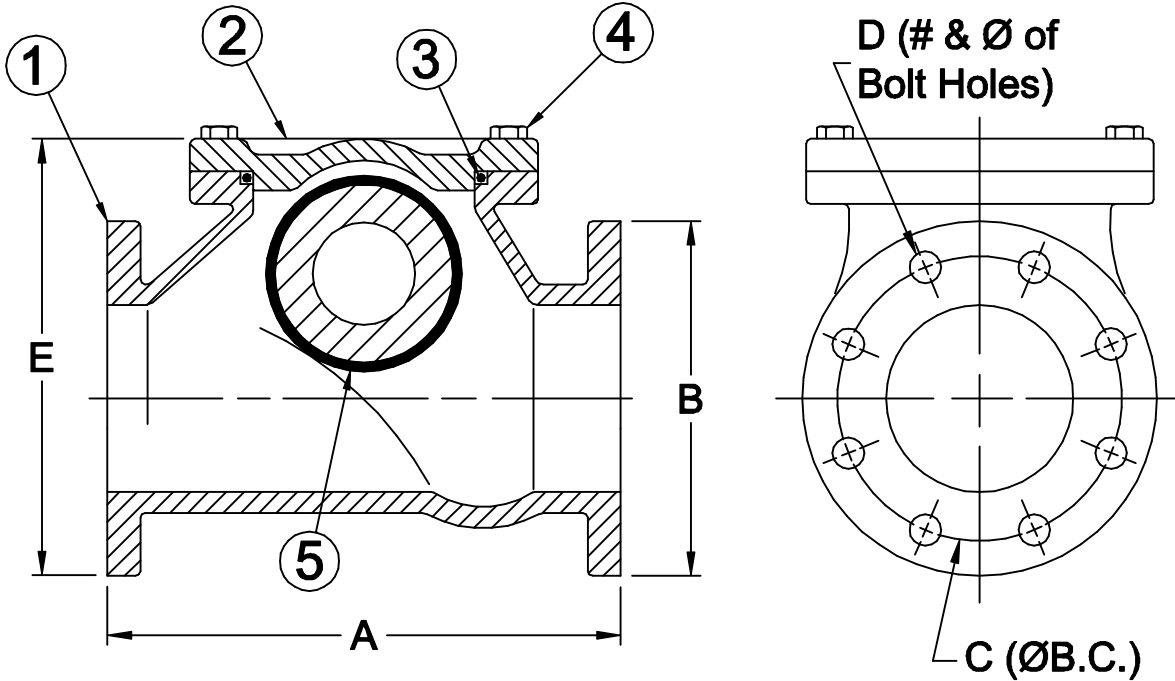
# 125# Flange

# Model 408



Sizes 4",6" & 8"/100mm,150mm & 200mm

## Materials



Item #	Qty	Description	Material	ASTM
1	1	Body	Cast Iron	A48
2	1	Cover	Cast Iron	A48
3	1	O'Ring	Buna-n	-----
4	A/R	Bolt	Stainless Steel	18-8
5	1	Ball (sinking)	Buna-n/Metal Ball	-----

\*Optional floating ball available add "FB" to part number

\*Optional dead ball available add "DB" to part number

## Dimensions

Size		Part #	A		B		C		D		E		Weight	
Inch	mm		Inch	mm	Inch	mm	Inch	mm	Inch	mm	Inch	mm	lbs	kg
4	100	2145	12-3/16	310	9	229	7-1/2	191	(8) 3/4	19	11-1/2	292	72	33
6	150	2146	16-1/16	408	11	279	9-1/2	241	(8) 7/8	22	14-27/32	377	132	60
8	200	2147	19-11/16	500	13-1/2	343	11-3/4	298	(8) 7/8	22	18-5/8	473	218	99

Danfoss Flomatic can accept no responsibility for possible errors in catalogues, brochures and other printed material. Danfoss Flomatic reserves the right to alter its products without notices. This also applies to product already agreed. All trademarks in this material are property of the respective companies. Danfoss and the logotype are trademarks of Danfoss A/S. All right reserved.

DANFOSS FLOMATIC CORP.  
GLENS FALLS, N.Y. 12801  
PHONE (518) 761-9797  
FAX (518) 761-9798

September 9, 2003  
Dwg No: S2145 Rev: A (4/04)

# FLOMATIC®