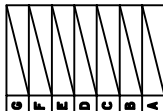
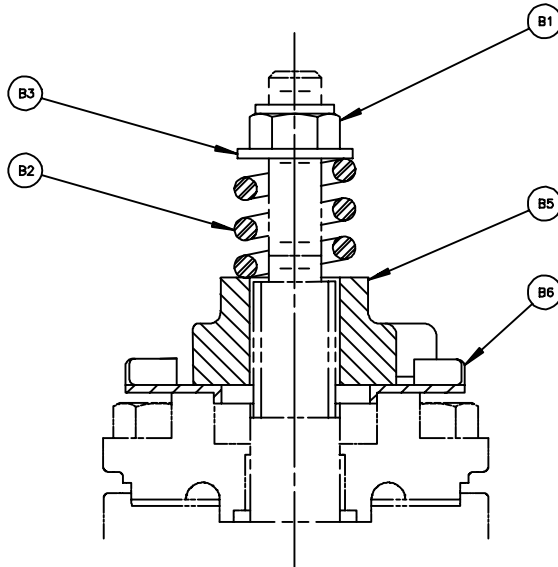
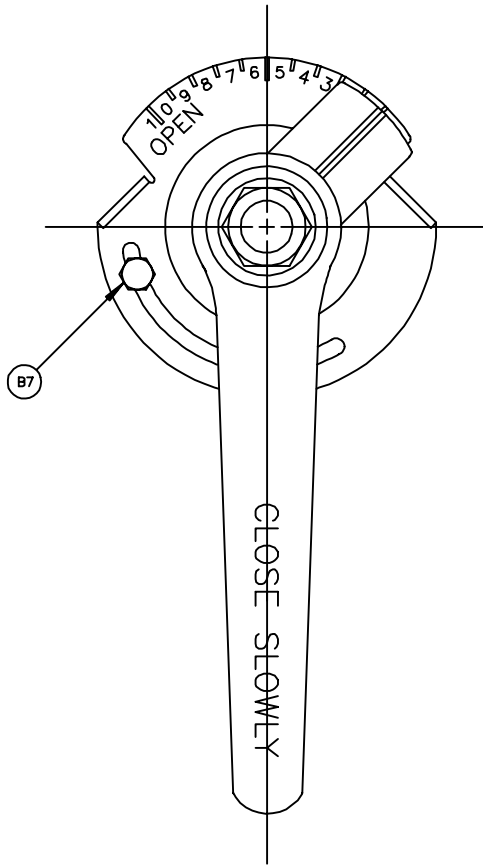


NO.	PART NAME	QTY.
B1	LOCK NUT	1
B2	SPRING	1
B3	WASHER	1
B4		
B5	HANDLE	1
B6	STOP RING	1
B7	SCREW	1

NOTE:

1. WHEN ORDERING PARTS, SPECIFY VALVE SIZE AND MODEL NUMBER FROM DATA PLATE, ALSO GIVE DRAWING NUMBER WITH PART NAME, ITEM NUMBER AND QUANTITY.



**GS DeZURIK**  
 A UNIT OF GENERAL SIGNAL  
 SARTELL, MINNESOTA, U.S.A. 56377  
 CAMBRIDGE, ONTARIO, CANADA  
 SUNBURY, VICTORIA, AUSTRALIA  
 CRANLINGTON, ENGLAND

LV LEVER ACTUATOR FOR USE WITH 1/2" - 3" PEC VALVES			
DOCT. CODE	DRAWN	JUM	APPROVED TK
C1	CHECKED	TK	DATE 01/30/98

A-50037